



India Meteorological Department

(Ministry of Earth Sciences)

NATIONAL BULLETIN NO.: 04 (BOB/03/2023)

TIME OF ISSUE: 2045 HOURS IST

DATED: 01.08.2023

FROM: INDIA METEOROLOGICAL DEPARTMENT (FAX NO. 24643965/24699216/24623220)

TO: CONTROL ROOM, NDM, MINISTRY OF HOME AFFAIRS (FAX.NO. 23093750)

CONTROL ROOM NDMA (FAX.NO. 26701729)

CABINET SECRETARIAT (FAX.NO.23012284, 23018638)

PS TO HON'BLE MINISTER FOR S & T AND EARTH SCIENCES (FAX NO.23316745)

SECRETARY, MOES (FAX NO. 24629777)

H.Q. (INTEGRATED DEFENCE STAFF AND CDS) (FAX NO. 23005137/23005147)

DIRECTOR GENERAL, DOORDARSHAN (23385843)

DIRECTOR GENERAL, AIR (23421105, 23421219)

PIB MOES (FAX NO. 23389042)

UNI (FAX NO. 23355841)

D.G. NATIONAL DISASTER RESPONSE FORCE (NDRF) (FAX NO. 26105912, 2436 3260)

DIRECTOR, PUNCTUALITY, INDIAN RAILWAYS (FAX NO. 23388503)

CHIEF SECRETARY, WEST BENGAL (FAX NO. 033-22144328)

CHIEF SECRETARY, ODISHA (FAX NO. 0674-2536660)

CHIEF SECRETARY, ANDHRA PRADESH (FAX NO. 0863-2441029, 08645-246600)

ADMINISTRATOR, ANDAMAN & NICOBAR ISLANDS (FAX NO. 03192- 232656)

Sub: Deep Depression over Northeast Bay of Bengal crossed Bangladesh coast close to east of Khepupara

The Deep Depression over Northeast Bay of Bengal off Bangladesh coast moved west-northwestwards with a speed of 27 kmph during past 6 hours and crossed Bangladesh coast near latitude 21.9°N and longitude 90.3°E close to east of Khepupara during 1530 to 1630 hours IST as a deep depression with maximum sustained wind speed of 55-65 kmph gusting to 75 kmph. Continuing to move west-northwestwards, it lay centred at 1730 hours IST of today, the 1st August, 2023 over coastal Bangladesh and neighbourhood near latitude 22.5°N and longitude 89.5°E, close to west of Mongla (Bangladesh), about 220 km east-northeast of Digha (West Bengal) and 120 km east of Kolkata (West Bengal).

It is likely to move further west-northwestwards across Gangetic West Bengal and maintain its intensity of deep depression till early morning of 2nd August. Thereafter, it is likely to weaken into a depression and continue to move west-northwestwards during subsequent 24 hours.

Forecast track and intensity are given in the following table:

Date/Time(IST)	Position (Lat. °N/ long. °E)	Maximum sustained surface wind speed (Kmph)	Category of cyclonic disturbance
01.08.23/1730	22.5/89.5	55-65 gusting to 75	Deep Depression
01.08.23/2330	23.3/88.3	55-65 gusting to 75	Deep Depression
02.08.23/0530	23.8/87.1	50-60 gusting to 70	Deep Depression
02.08.23/1130	24.0/85.9	45-55 gusting to 65	Depression
02.08.23/1730	24.2/84.7	45-55 gusting to 65	Depression
03.08.23/0530	24.6/82.5	40-50 gusting to 60	Depression

Spatial rainfall distribution: Isolated: <25%, A few: 26-50%, Many: 51-75%, Most: 76-100%

Rainfall amount (mm): Heavy rain: 64.5 – 115.5, Very heavy rain: 115.6 – 204.4, Extremely heavy rain: 204.5 or more.

Warnings:

(i) Rainfall warning

Odisha: Light to moderate rainfall at most places with isolated heavy to very heavy rainfall over Odisha during 1st to 3rd and isolated extremely heavy rainfall over north Odisha on 1st & 2nd August.

Gangetic West Bengal: Light to moderate rainfall at most places with isolated heavy to very heavy rainfall over Gangetic West Bengal on 1st & 2nd and isolated extremely heavy rainfall over coastal districts on 1st August.

Jharkhand: Light to moderate rainfall at most places with isolated heavy to very heavy rainfall on 1st and 2nd August.

Chhattisgarh: Light to moderate rainfall at most places with isolated heavy to very heavy rainfall over north Chhattisgarh during 1st and 3rd August.

Bihar: Light to moderate rainfall at most places with isolated heavy to very heavy rainfall during 1st to 3rd August.

East Madhya Pradesh: Light to moderate rainfall at most places with isolated heavy to very heavy rainfall during 1st to 3rd August and isolated extremely heavy rainfall on 3rd August.

West Madhya Pradesh: Light to moderate rainfall at most places with isolated heavy to very heavy rainfall during 2nd to 3rd August.

(ii) Wind warning

Squally wind speed reaching 55-65 kmph gusting to 75 kmph is prevailing over North & adjoining Central Bay of Bengal and along & off Bangladesh-West Bengal coasts and 45-55 kmph gusting to 65 kmph is prevailing along & off North Odisha coast. It is likely to continue over these regions till morning of tomorrow, the 2nd August and decrease thereafter.

(iii) Sea Condition: Rough to very rough sea condition is prevailing over North & adjoining Central Bay of Bengal and along & off Bangladesh-West Bengal-North Odisha coasts and it is likely to continue till forenoon of 2nd August.

(iv) Fishermen Warning

Fishermen are advised not to venture into North & adjoining Central Bay of Bengal and along & off Bangladesh-West Bengal-North Odisha coasts till forenoon of 2nd August.

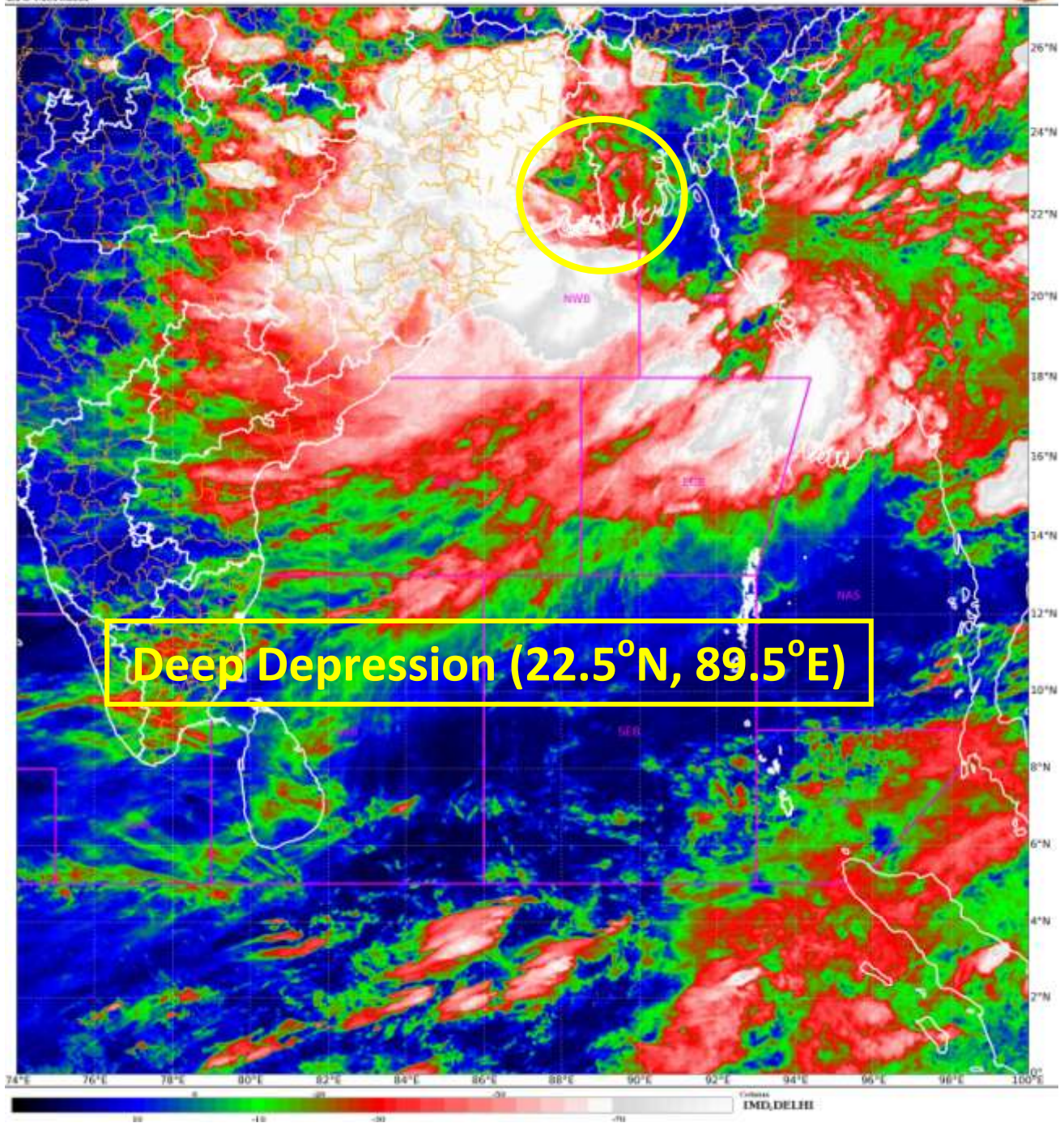
(v) Damage Expected over coastal districts of West Bengal

- Minor damage to loose / unsecured structures.
- Some breaches in Kutcha road due to flooding.
- Minor damage to Banana trees and near coastal agriculture.
- Damage to standing agriculture & horticulture crops.
- Minor damage to Kutcha embankments.

The next bulletin will be issued at 0230hrs IST of 2nd August, 2023.

(Ananda Kumar Das)
Scientist-F, RSMC, New Delhi

Copy to: CRS, Pune/ACWC Kolkata/Chennai/CWC Bhubaneswar/CWC Visakhapatnam/MO Port Blair



Spatial rainfall distribution: Isolated: <25%, A few: 26-50%, Many: 51-75%, Most: 76-100%
Rainfall amount (mm): Heavy rain: 64.5 – 115.5, Very heavy rain: 115.6 – 204.4, Extremely heavy rain: 204.5 or more.



OBSERVED AND FORECAST TRACK OF DEEP DEPRESSION OVER COASTAL BANGLADESH BASED ON 1200 UTC (1730 IST) OF 01ST AUGUST 2023.



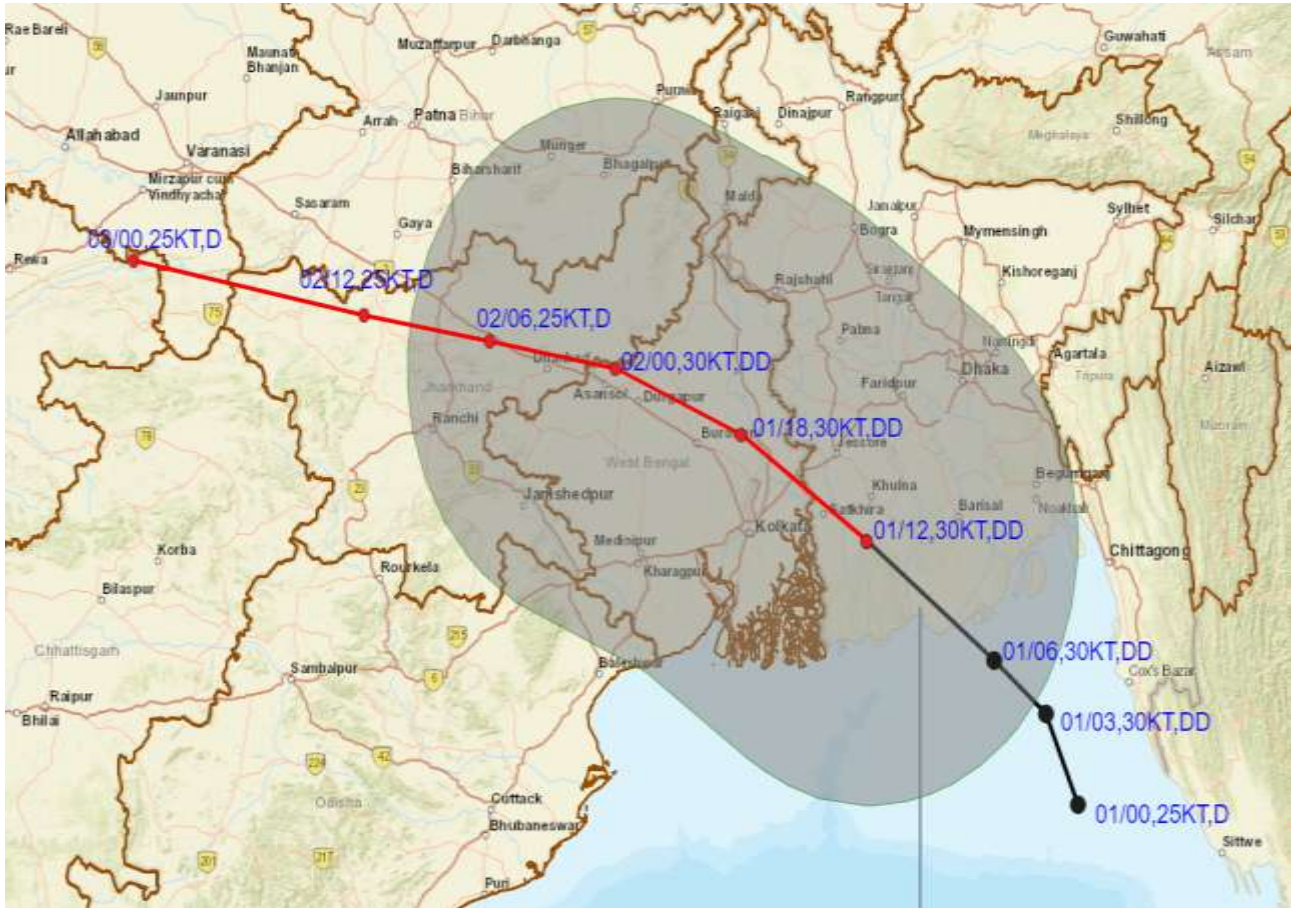
DATE/TIME IN UTC
IST=UTC + 0530
L: LOW PRESSURE AREA
WML: WELL MARKED LOW PRESSURE AREA
D: DEPRESSION (17-27 KT)
DD: DEEP DEPRESSION (28-33 KT)
CS: CYCLONIC STORM (34-47 KT)
SCS: SEVERE CYCLONIC STORM (48-63KT)
VSCS: VERY SEVERE CYCLONIC STORM (64-89 KT)
ECS: EXTREMELY SEVERE CYCLONIC STORM (90-119 KT)
SuCS: SUPER CYCLONIC STORM (≥ 120 KT)

- LESS THAN 34 KT
- 34-47 KT
- ≥ 48 KT
- OBSERVED TRACK
- FORECAST TRACK
- CONE OF UNCERTAINTY

Spatial rainfall distribution: Isolated: <25%, A few: 26-50%, Many: 51-75%, Most: 76-100%
Rainfall amount (mm): Heavy rain: 64.5 – 115.5, Very heavy rain: 115.6 – 204.4, Extremely heavy rain: 204.5 or more.



OBSERVED AND FORECAST TRACK ALONGWITH QUADRANT WIND DISTRIBUTION OF DEEP DEPRESSION OVER COASTAL BANGLADESH BASED ON 1200 UTC (1730 IST) OF 01ST AUGUST 2023.



DATE/TIME IN UTC

IST=UTC + 0530

L: LOW PRESSURE AREA

WML: WELL MARKED LOW PRESSURE AREA

D: DEPRESSION (17-27 KT)

DD: DEEP DEPRESSION (28-33 KT)

CS: CYCLONIC STORM (34-47 KT)

SCS: SEVERE CYCLONIC STORM (48-63KT)

VSCS: VERY SEVERE CYCLONIC STORM (64-89 KT)

ESCS: EXTREMELY SEVERE CYCLONIC STORM (90-119 KT)

SuCS: SUPER CYCLONIC STORM (≥ 120 KT)

● LESS THAN 34 KT

○ 34-47 KT

● ≥ 48 KT

— OBSERVED TRACK

— FORECAST TRACK

▲ CONE OF UNCERTAINTY

AREA OF MAXIMUM SUSTAINED WIND SPEED:

■ 28-33 KT (52-61 KMPH)

■ 34-49 KT (62-91 KMPH)

■ 50-63 KT (92-117 KMPH)

■ ≥ 64 KT (≥118 KMPH)

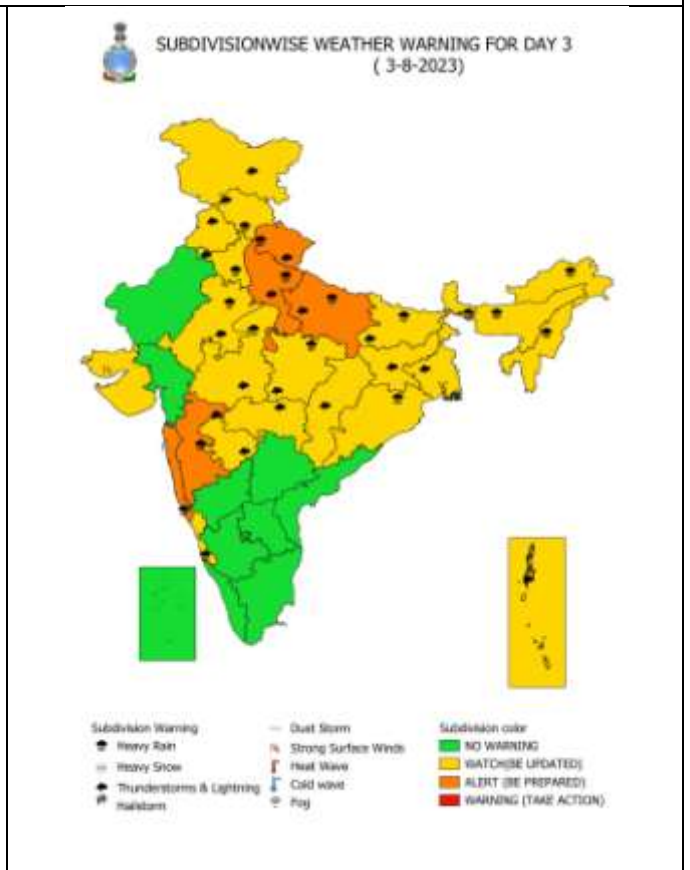
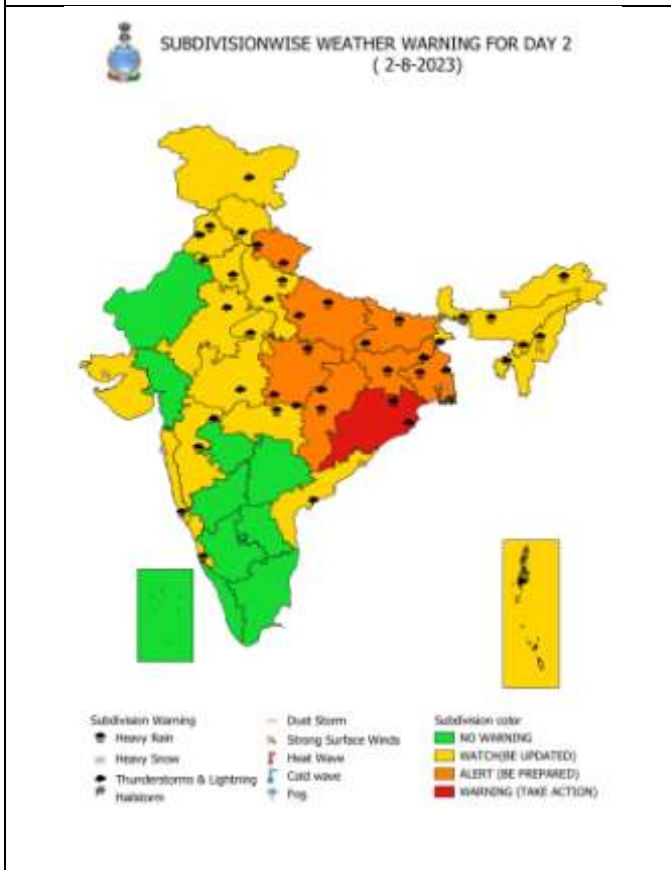
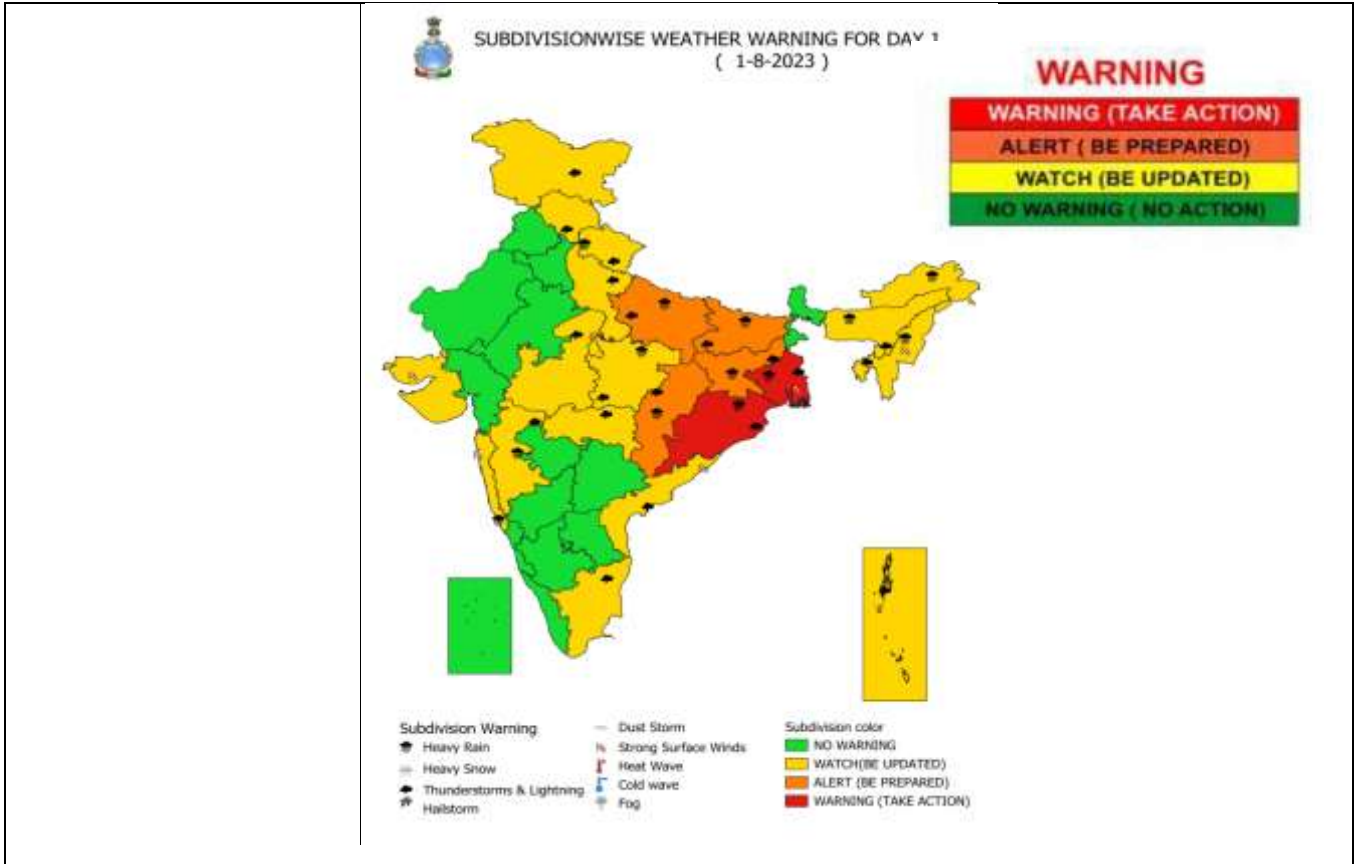
IMPACT OVER THE SEA

MSW (knot/kmph)	Impact	Action
28-33 (52-61)	Very rough seas	Total suspension of fishing operations
34-49 (62-91)	High to very high seas	Total suspension of fishing operations
50-63 (92-117)	Very high seas	Total suspension of fishing operations
≥ 64 (≥118)	Phenomenal	Total suspension of fishing operations

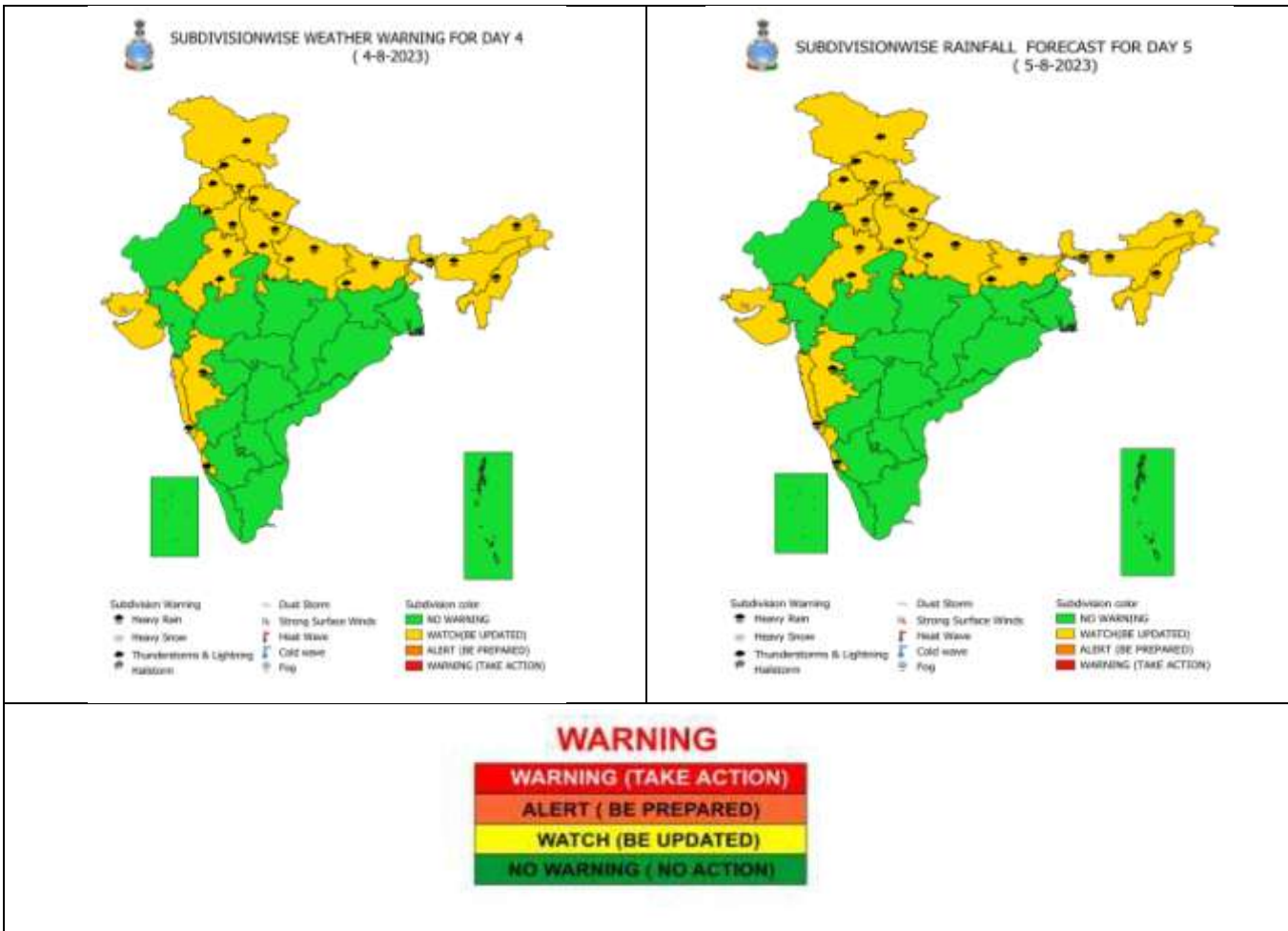
Spatial rainfall distribution: Isolated: <25%, A few: 26-50%, Many: 51-75%, Most: 76-100%

Rainfall amount (mm): Heavy rain: 64.5 – 115.5, Very heavy rain: 115.6 – 204.4, Extremely heavy rain: 204.5 or more.

Weather Warning Graphics

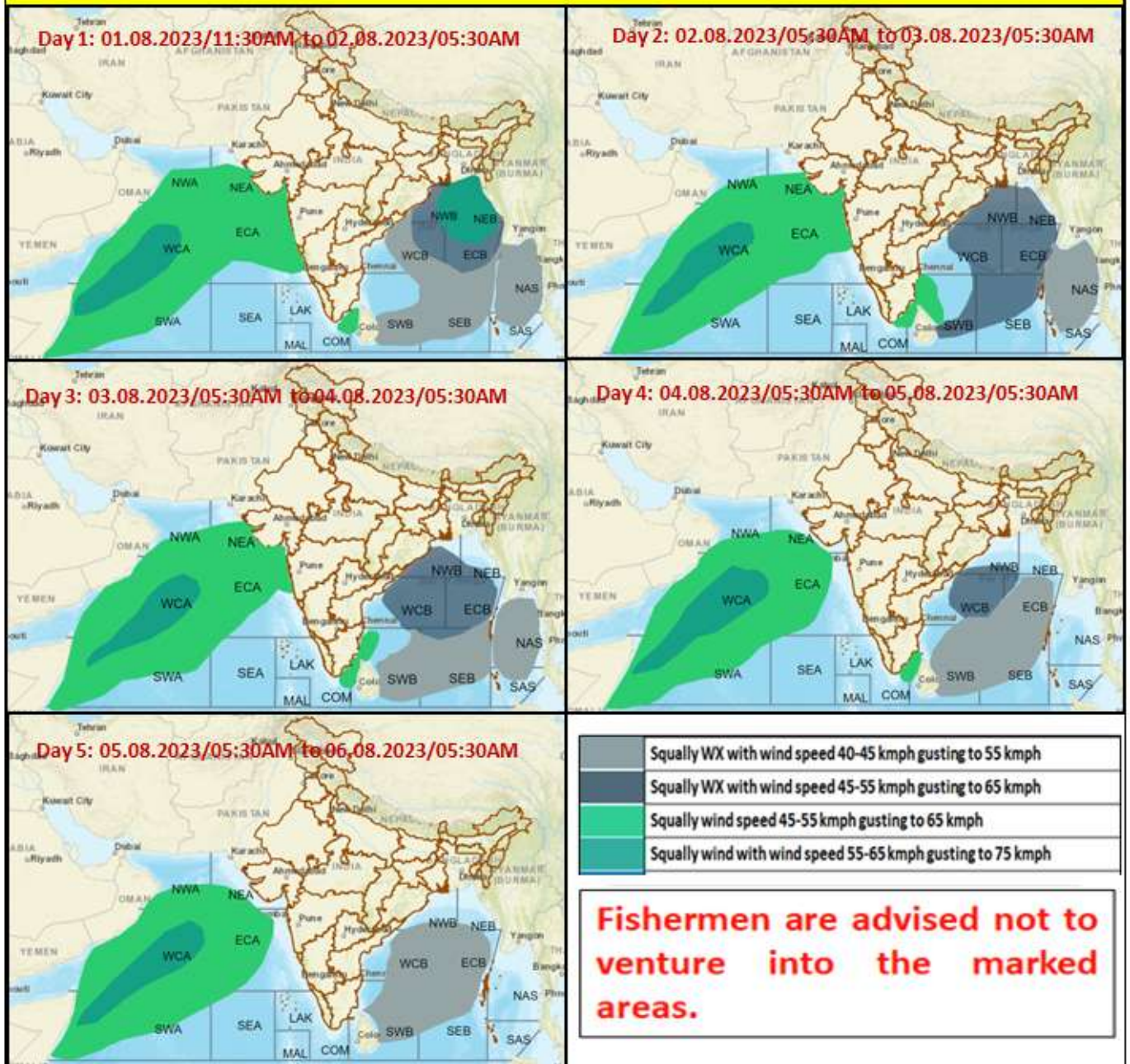


Spatial rainfall distribution: Isolated: <25%, A few: 26-50%, Many: 51-75%, Most: 76-100%
Rainfall amount (mm): Heavy rain: 64.5 – 115.5, Very heavy rain: 115.6 – 204.4, Extremely heavy rain: 204.5 or more.



Spatial rainfall distribution: Isolated: <25%, A few: 26-50%, Many: 51-75%, Most: 76-100%
Rainfall amount (mm): Heavy rain: 64.5 – 115.5, Very heavy rain: 115.6 – 204.4, Extremely heavy rain: 204.5 or more.

Fishermen warning graphics



Spatial rainfall distribution: Isolated: <25%, A few: 26-50%, Many: 51-75%, Most: 76-100%
 Rainfall amount (mm): Heavy rain: 64.5 – 115.5, Very heavy rain: 115.6 – 204.4, Extremely heavy rain: 204.5 or more.

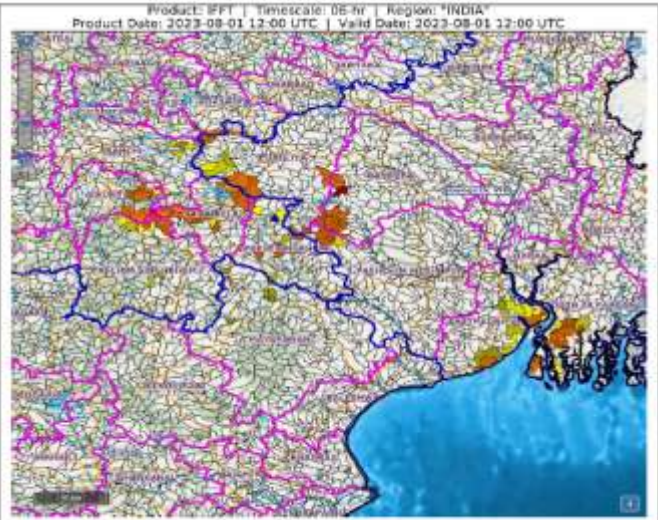
Flash Flood Guidance

Observed Flash Flood Threat (IFFT) till 1730 IST of 01-08-2023 :

Low to Moderate flash flood threat observed over few watersheds & neighbourhoods of following Met Sub-divisions during last 6 hours.

Gangetic West Bengal - Bankura, Eastmednipur, Puruliya and South 24 Parganas districts.

Jharkhand - Bokaro, East Singhbhum, Khunti, Ranchi, Saraikela and West Singhbhum districts.



24 hours Outlook for the Flash Flood Risk (FFR) till 1730 IST of 02-08-2023 :

Moderate flash flood risk likely over few watersheds & neighbourhoods of **Northern parts of Odisha adjoining Gangetic West Bengal, Jharkhand adjoining Northern parts of Chhattisgarh, South Eastern parts of East Uttar Pradesh and East Madhya Pradesh** Met Sub-divisions during next 24 hours.

Surface runoff/ Inundation may occur at some fully saturated soils & low-lying areas over AoC as shown in map due to expected rainfall occurrence in next 24 hours.

